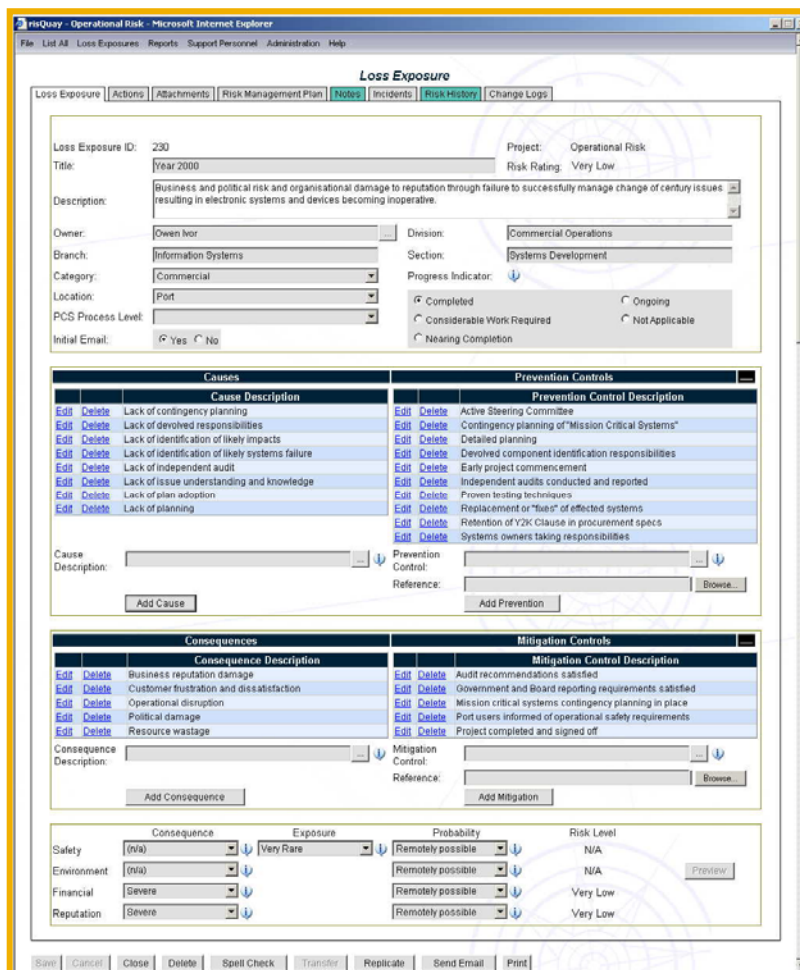




### Client

Fremantle Ports is the strategic manager for several ports including the Port of Fremantle. It is responsible for ensuring that port services and facilities are provided in a reliable, competitive and efficient way.

<b>Project</b>	risQuay
<b>Project Duration</b>	July 2003 to January 2004
<b>Outcome</b>	The successful redevelopment of the risQuay application, conversion of previous risk register data from Microsoft Access to SQL Server and integration of the new application with other intranet applications such as Action Management and ICI. The project was delivered on time and under budget and the client was extremely satisfied with the outcome.
<b>Key Points</b>	<ul style="list-style-type: none"><li>– Project Planning and Management</li><li>– Stakeholder facilitation through interviews and workshops</li><li>– Requirements specification</li><li>– Design specification</li><li>– System Testing</li><li>– Data Conversion</li><li>– User Acceptance Planning</li><li>– Implementation Planning</li><li>– Microsoft .Net Development utilising VB.Net, ASP.Net, Crystal Reports.Net, HTML, DHTML and JavaScript</li></ul>



### The Need

The risQuay application deals with the management of loss exposures on a strategic, operational and project level at Fremantle Ports.

Based on the level of consequences, exposure and probability entered the system calculates the risk rating. Based on this rating, actions are then taken to help reduce the rating.

This original system was developed using Microsoft Access and due to the poor system

performance and usability issues the system was not utilised as much as it should have been by all staff. With Fremantle Ports also seeking certification in ISO14001 (Environment), ISO9001 (Quality) and AS4801 (Safety) Standards, the risQuay system needed to be further enhanced to comply with the new standards and assist in gaining certification.

## The Solution

Ross was contracted to provide a consultant to conduct a requirements gathering phase for the new risQuay application. The requirements were then documented and this in turn led to the documentation of a design specification. A team of consultants were then employed to develop the new application using Microsoft .Net technologies. The developed application was to be run from Fremantle Ports existing intranet and needed to be designed and developed to confirm to the existing Intranet Application Standards. The highlights of the solution included:

- User-friendly application, maintaining the look and feel of previous intranet applications.
- Enhanced searching functionality
- Email notifications of newly created Loss Exposures and quarterly reminder emails to review Loss Exposure Risk Ratings.
- Integration to Action Management system to manage the actions arising from attempting to reduce the Risk Rating of loss exposures.
- Generation of a Risk Management Plan based on the data entered for a Loss Exposure.
- Integration to ICI system to display incidents relating to particular Loss Exposures.
- Management of file attachments to loss exposures.
- Enhanced reporting functionality using Crystal Reports.Net

## The Result

The system was delivered on time and under budget. The quality of the application was delivered was to a high standard with no support issues required since its implementation. The client is extremely happy with the result.

The screenshot shows the 'risQuay - Strategic Risk' application in a Microsoft Internet Explorer browser. The interface includes a search bar at the top, followed by several filter sections: Owner, Title, ID; Risk Rating From/To; Category, Location, Progress Indicator; PCS Process; Division, Branch, Section. Below these is a section for specifying search options (Title & Description, Causes, Consequences, Mitigation Controls, Prevention Controls) and a text input field. The main content area displays a table of loss exposures with columns for ID, Title, Category, Location, Owner, Progress Indicator, and Risk Rating. At the bottom, there are buttons for Search, Clear, Close, Export, Email All, Send Email, and Print.

ID	Title	Category	Location	Owner	Progress Indicator	Risk Rating
76	Innovation Process	Commercial	Port	Sanderson Kerry	N/A	N/A
74	Landcare trust founding partner	Environment	Port	Valenti Gino	N/A	Very Low
4	Handling Class 1 cargoes	Safety	North Quay	Valenti Gino	Completed	Very Low
14	Services from other Government Agencies	Commercial	Property	Smith-Khoo Leigh	N/A	Very Low
11	Handling Class 8 cargoes (BCJ - bulk)	Safety	Kwinana Bulk Jetty	Valenti Gino	Completed	Very Low